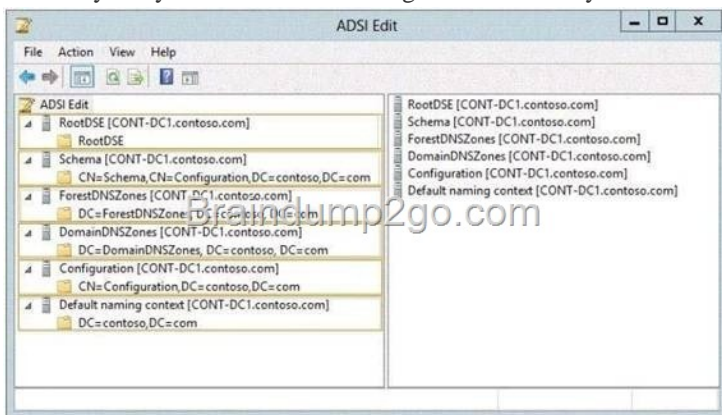


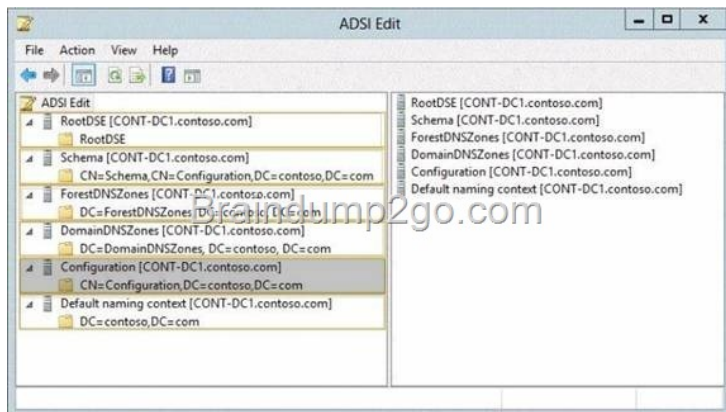
## Official 2014 Latest Microsoft 70-411 Exam Dump Free Download(1-10)!

QUESTION 1 Your network contains an Active Directory domain named contoso.com. The domain contains a domain controller named DC1 that runs Windows Server 2012 R2. All client computers run Windows 8 Enterprise. DC1 contains a Group Policy object (GPO) named GPO1. You need to deploy a VPN connection to all users. What should you configure from Users Configuration in GPO1? A. Policies/Administrative Templates/Network/Network Connections B. Policies/Administrative Templates/Network/Windows Connect Now C. Preferences/Control Panel Settings/Network Options D. Policies/Administrative Templates/Windows Components/Windows Mobility Centre Answer: C Explanation:

<http://technet.microsoft.com/en-us/library/cc772107.aspx> To create a new Dial-Up Connection preference item Open the Group Policy Management Console. Right-click the Group Policy object (GPO) that should contain the new preference item, and then click Edit. In the console tree under Computer Configuration or User Configuration, expand the Preferences folder, and then expand the Control Panel Settings folder. Right-click the Network Options node, point to New, and select Dial-Up Connection. QUESTION 2 Hotspot Question Your network contains an Active Directory forest named contoso.com. The forest contains a single domain. All domain controllers run Windows Server 2012 R2 and are configured as DNS servers. All DNS zones are Active Directory-integrated. Active Directory Recycle Bin is enabled. You need to modify the amount of time deleted objects are retained in the Active Directory Recycle Bin. Which naming context should you use? To answer, select the appropriate naming context in the answer area.

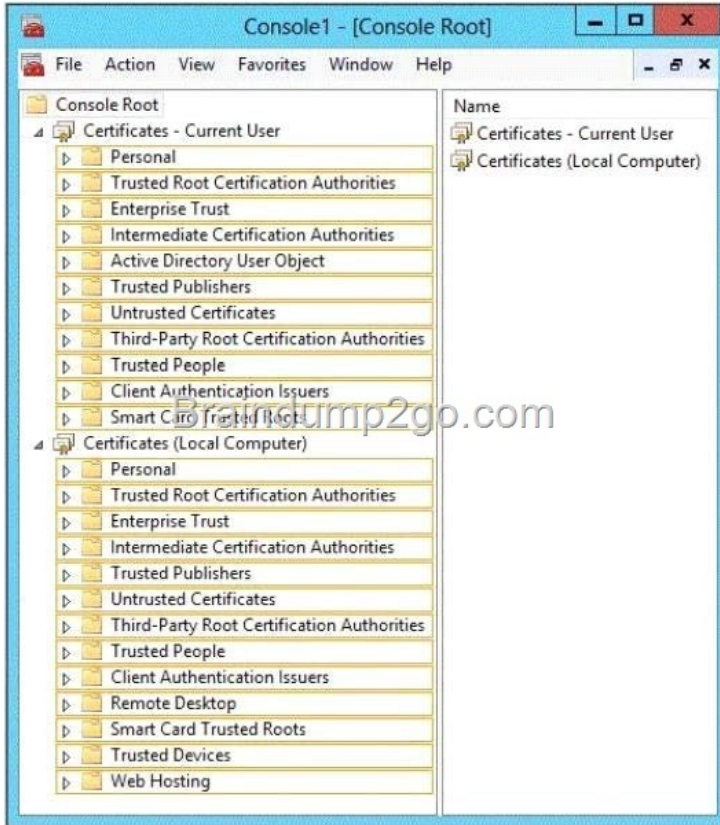


Answer:

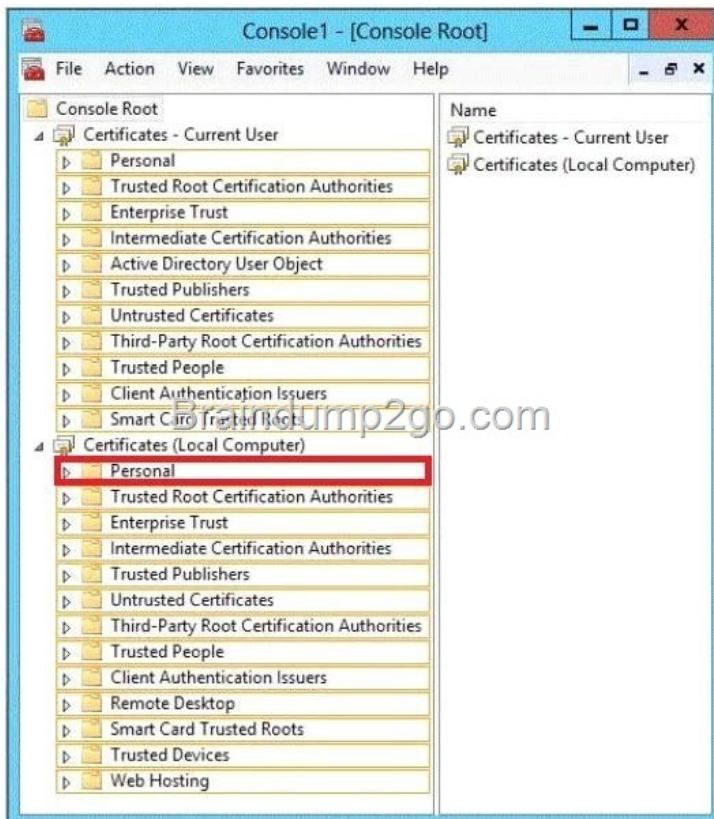


QUESTION 3 Your network contains an Active Directory domain named adatum.com. You have a standard primary zone named adatum.com. You need to provide a user named User1 the ability to modify records in the zone. Other users must be prevented from modifying records in the zone. What should you do first? A. Run the Zone Signing Wizard for the zone. B. From the properties of the zone, change the zone type. C. Run the new Delegation Wizard for the zone. D. From the properties of the zone, modify the Start Of Authority (SOA) record. Answer: C QUESTION 4 Your network contains an Active Directory domain named contoso.com. All domain controllers run Windows Server 2012 R2. One of the domain controllers is named DC1. The DNS zone for the contoso.com zone is Active Directory-integrated and has the default settings. A server named Server1 is a DNS server that runs a UNIX-based operating system. You plan to use Server1 as a secondary DNS server for the contoso.com zone. You need to ensure that Server1 can host a secondary copy of the contoso.com zone. What should you do? A. From Windows PowerShell, run the

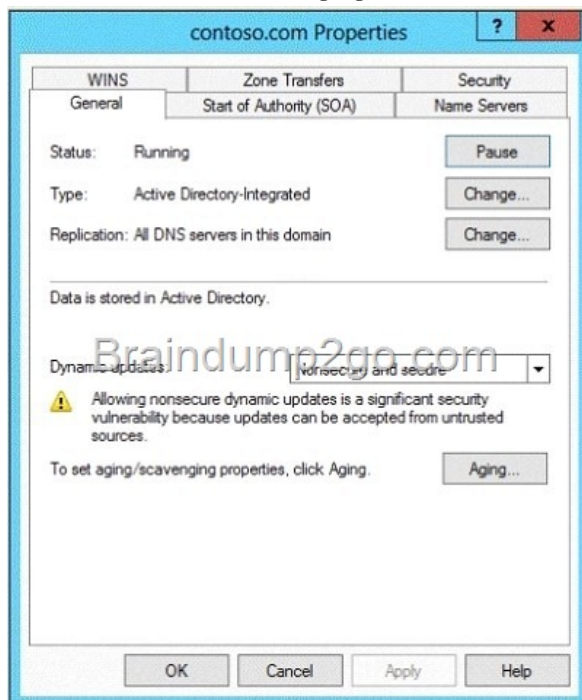
Set-DnsServerForwarder cmdlet and specify the contoso.com zone as a target. B. From Windows PowerShell, run the Set-DnsServerSetting cmdlet and specify DC1 as a target. C. From Windows PowerShell, run the Set-DnsServerPrimaryZone cmdlet and specify the contoso.com zone as a target. D. From DNS Manager, modify the Advanced settings of DC1. Answer: C  
Explanation: C. The Set-DnsServerSecondaryZone cmdlet changes settings for an existing secondary zone on a Domain Name System (DNS) server. [http://technet.microsoft.com/en-us/library/jj649920\(v=wps.620\).aspx](http://technet.microsoft.com/en-us/library/jj649920(v=wps.620).aspx) QUESTION 5 You have a server named Server1 that has the Web Server (IIS) server role installed. You obtain a Web Server certificate. You need to configure a website on Server1 to use Secure Socket Layer (SSL). To which store should you import the certificate? To answer, select the appropriate store in the answer area.



Answer:



QUESTION 6 Your network contains an Active Directory domain named contoso.com. The domain contains a domain controller named DC1. DC1 is a DNS server for contoso.com. The properties of the contoso.com zone are configured as shown in the exhibit. (Click the Exhibit button.)



The domain contains a server named Server1 that is part of a workgroup named Workgroup. Server1 is configured to use DC1 as a DNS server. You need to ensure that Server1 dynamically registers a host (A) record in the contoso.com zone. What should you configure? A. The Dynamic updates setting of the contoso.com zone B. The workgroup name of Server1 C. The primary DNS suffix of Server1 D. The Security settings of the contoso.com zone Answer: C Explanation:

<http://technet.microsoft.com/en-us/library/cc778792%28v=ws.10%29.aspx>

<http://technet.microsoft.com/en-us/library/cc778792%28v=ws.10%29.aspx>

<http://www.advicehow.com/adding-primary-dns-suffix-in-microsoft-windows-8/>

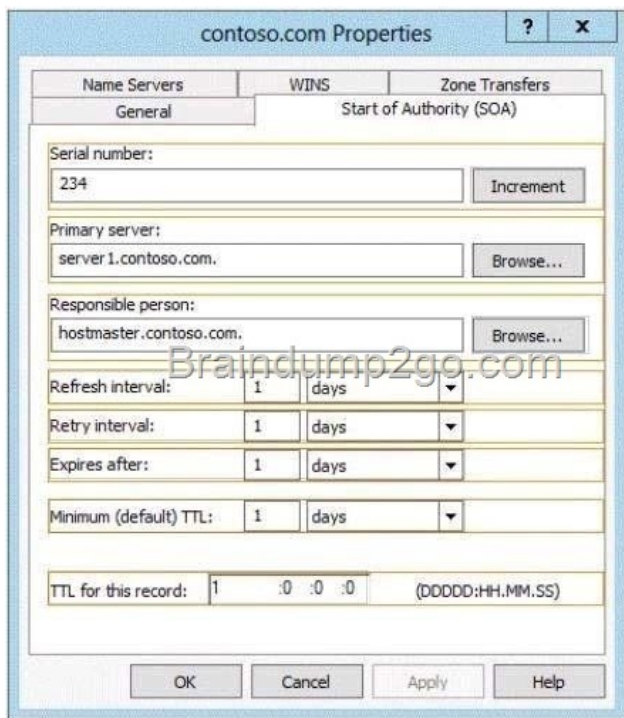
<http://technet.microsoft.com/en-us/library/cc959611.aspx> QUESTION 7 Your network contains an Active Directory domain named

contoso.com. The domain contains six domain controllers named DC1, DC2, DC3, DC4, DC5, and DC6. Each domain controller has the DNS Server server role installed and hosts an Active Directory-integrated zone for contoso.com. You plan to create a new Active Directory-integrated zone named litwareinc.com that will be used for testing. You need to ensure that the new zone will be available only on DC5 and DC6. What should you do first? A. Create an application directory partition. B. Change the zone replication scope. C. Create an Active Directory connection object. D. Create an Active Directory site link. Answer: A

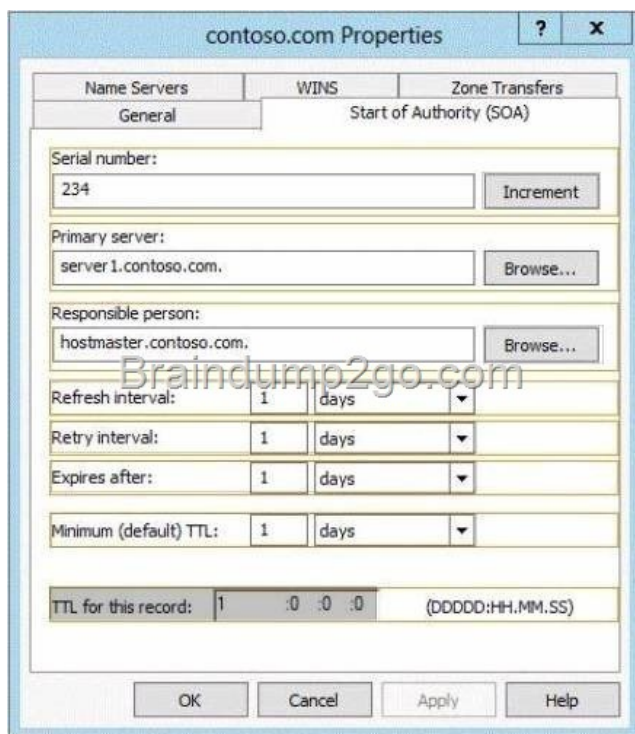
Explanation: A. A partition is a data structure in AD DS that distinguishes data for different replication purposes. When you create an application directory partition for DNS, you can control the scope of replication for the zone that is stored in that partition

<http://technet.microsoft.com/en-us/library/cc754292.aspx> QUESTION 8 Your network contains a DNS server named Server1 that

runs Windows Server 2012 R2. Server1 has a zone named contoso.com. The network contains a server named Server2 that runs Windows Server 2008 R2. Server1 and Server2 are members of an Active Directory domain named contoso.com. You change the IP address of Server2. Several hours later, some users report that they cannot connect to Server2. On the affected users' client computers, you flush the DNS client resolver cache, and the users successfully connect to Server2. You need to reduce the amount of time that the client computers cache DNS records from contoso.com. Which value should you modify in the Start of Authority (SOA) record? To answer, select the appropriate setting in the answer area.



Answer:



QUESTION 9 Your network contains an Active Directory domain named contoso.com. The domain contains a server named Server1 that runs Windows Server 2012 R2. You enable and configure Routing and Remote Access (RRAS) on Server1. You create a user account named User1. You need to ensure that User1 can establish VPN connections to Server1. What should you do? A. Create a network policy. B. Modify the members of the Remote Management Users group. C. Create a connection request policy. D. Add a RADIUS client. Answer: A Explanation: A. Configure your VPN server to use Network Access Protection (NAP) to enforce health requirement policies. B. determines which users and groups should have permission to log on remotely C. Connection request policies are sets of conditions and settings that allow network administrators to designate which Remote Authentication Dial-In User Service (RADIUS) servers perform the authentication and authorization of connection requests that the server running Network Policy Server (NPS) receives from RADIUS client D. A network access server (NAS) is a device that

provides some level of access to a larger network. A NAS using a RADIUS infrastructure is also a RADIUS client, sending connection requests and accounting messages to a RADIUS server for authentication, authorization, and accounting.

[http://technet.microsoft.com/en-us/library/dd314165\(v=ws.10\).aspx](http://technet.microsoft.com/en-us/library/dd314165(v=ws.10).aspx) <http://technet.microsoft.com/en-us/library/dd469733.aspx>  
<http://technet.microsoft.com/en-us/library/dd469660.aspx> <http://technet.microsoft.com/en-us/library/cc753603.aspx>

<http://technet.microsoft.com/en-us/library/cc754033.aspx> QUESTION 10 Server1 as a DNS server hosts a Primary zone, Server2 is the secondary zone contoso.com domain, you need to determine how long Server2 Server1 to renew regional, how to configure A. Refresh interval B. Restart DNS C. Forwarders D. Stub zone Answer: A Explanation:

[http://technet.microsoft.com/en-us/library/cc755646\(v=ws.10\).aspx](http://technet.microsoft.com/en-us/library/cc755646(v=ws.10).aspx) Passing Microsoft 70-411 Exam successfully in a short time!  
Just using Braindump2go's Latest Microsoft 70-411 Dump: <http://www.braindump2go.com/70-411.html>